

PART NUMBER	NO. OF POS.	INCHES							MILLIMETERS					
		A±.008	B±.008	C±.015	D±.010	E±.020	F±.015	A±0.20	B±0.20	C±0.38	D±0.25	E±0.51	F±0.38	
E_C03DCW(CT)B-S524	3	0.200	'B' MOUNTING ONLY											
E_C18DCW(CT)-S524	18	1.700	1.900	2.060	2.375	2.635	1.950	43.18	48.26	52.32	60.33	66.93	49.53	
E_C22DCW(CT)-S524	22	2.100	2.300	2.460	2.775	3.035	2.350	53.34	58.42	62.48	70.49	77.09	59.69	
E_C31DCW(CT)-S524	31	3.000	3.200	3.360	3.675	3.935	3.250	76.20	81.28	85.34	93.35	99.95	82.55	

REVISIONS				
REV.	ECO. NO	DESCRIPTION	DATE	BY
A	2756	INITIAL RELEASE (OBSOLETE DWG 3062, 2790, 2710)	4/12/2013	JH

PART NUMBER CODING

E C _ _ D _ _ -S524

MOUNTING STYLE
 N = NO MOUNTING EARS
 B = OPEN CARD SLOT

TERMINATION TYPE
 CW = .125" (SEE SECTION A-A FOR DETAILS)
 CT = .170" (SEE SECTION A-A FOR DETAILS)

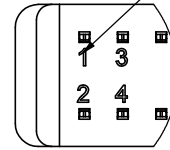
NUMBER OF POSITIONS (CONTACTS PER ROW)

PLATING

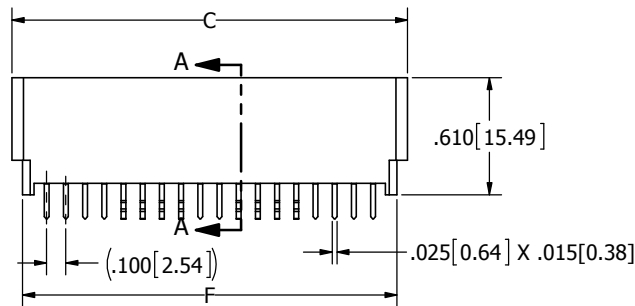
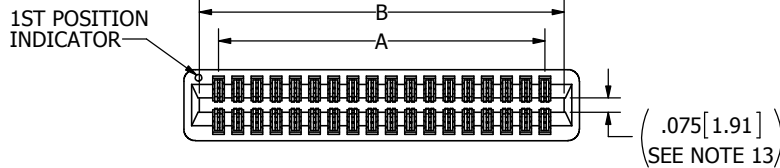
ALL PLATINGS ARE LEAD FREE AND HAVE .000050" NICKEL UNDERPLATE

CONTACT SURFACE TERMINATION
 B = .000010" GOLD .000100" PURE TIN, MATTE
 C = .000030" GOLD .000100" PURE TIN, MATTE

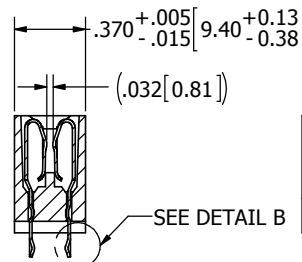
CONTACT IDs:
 1 3 5 ... 25 27 29 ...
 2 4 6 ... 26 28 30 ...



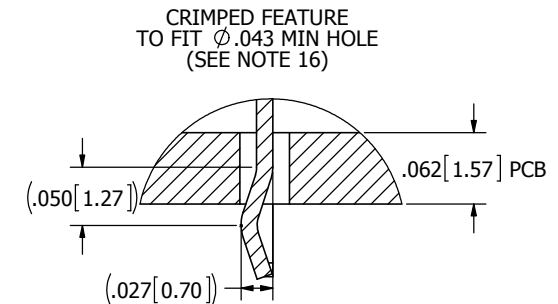
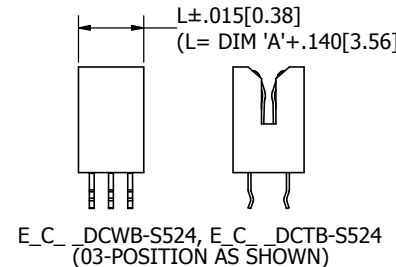
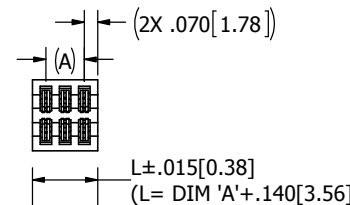
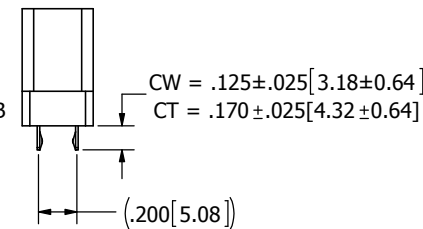
CONTACT ID SCALE 4:1



E_C _ _ DCWN-S524
 E_C _ _ DCTN-S524
 (FOR 18, 22 AND 31 POSITIONS)



SECTION A-A



DETAIL B SCALE 12 : 1

- NOTES:**
- INSULATOR MATERIAL: PBT
 - CONTACT MATERIAL: PHOSPHOR BRONZE
 - PLATING: SEE PART NUMBER CODING
 - OPERATING TEMPERATURE: -65 °C TO +125 °C
 - PROCESSING TEMP: WAVE/MANUAL SOLDERING
 - UL FLAMMABILITY RATING: 94V-0
 - OPERATING VOLTAGE: 700 VAC MINIMUM AT SEA LEVEL
 - CURRENT RATING: 3 AMP
 - CONTACT RESISTANCE: 30 MILLI OHMS MAX
 - INSULATION RESISTANCE: 5000 MEGA OHMS
 - DURABILITY: 500 CYCLES MIN
 - CONNECTOR IDENTIFICATION: THE PART SHALL BE MARKED WITH A PART NUMBER AND LOT CODE
 - BOARD THICKNESS ACCOMMODATED: .062 ± .008 [1.57 ± 0.20]
 - INSERTION FORCE: 16 OZ MAX PER CONTACT PAIR WHEN USING A .062 [1.57] TEST BLADE
 - INTERNAL INSPECTION TO BE PER SULLIN'S WORK INSTRUCTION WI7.3-01
 - WITHDRAWAL FORCE: 1 OZ MIN PER CONTACT PAIR USING .062 [1.57] PCB
 - MODIFICATION: LOCK FEATURE FOR .043" HOLE.
 FOR 03-POSITION: LOCK FEATURE ON ALL POSITIONS.
 FOR 18-POSITION: LOCK FEATURE ON 09 THRU 16 AND 21 THRU 28
 FOR 22-POSITION: LOCK FEATURE ON 13 THRU 20 AND 25 THRU 32
 FOR 31-POSITION: LOCK FEATURE ON 23 THRU 30 AND 35 THRU 42



RoHS COMPLIANT

UNLESS OTHERWISE SPECIFIED: DIMENSIONS ARE IN INCHES (MM)		DRAWN	DATE	NAME	
TOLERANCES: ANGULAR: ± 1° DECIMALS .XX = ± .02 [5] .XXX = ± .005 [13] .XXXX = ± .0005 [013]		JH	04/12/13	JH	
<small>THE INFORMATION HEREIN CONTAINS PROPRIETARY INFORMATION OF SULLINS ELECTRONICS AND IS NOT TO BE REPRODUCED, USED OR DISCLOSED TO OTHERS FOR ANY PURPOSE EXCEPT AS SPECIFICALLY AUTHORIZED IN WRITING BY AN OFFICER OF SULLINS ELECTRONICS.</small>					TITLE EDGECARD CONNECTOR .100 CC HP
PART NUMBER E_C _ _ DCW(DCT) _ - S524					SIZE C
CAGE CODE 54453		DWG. NO. C12166		REV A	SCALE: 2:1 SHEET 1 OF 1

CUSTOMER COPY